

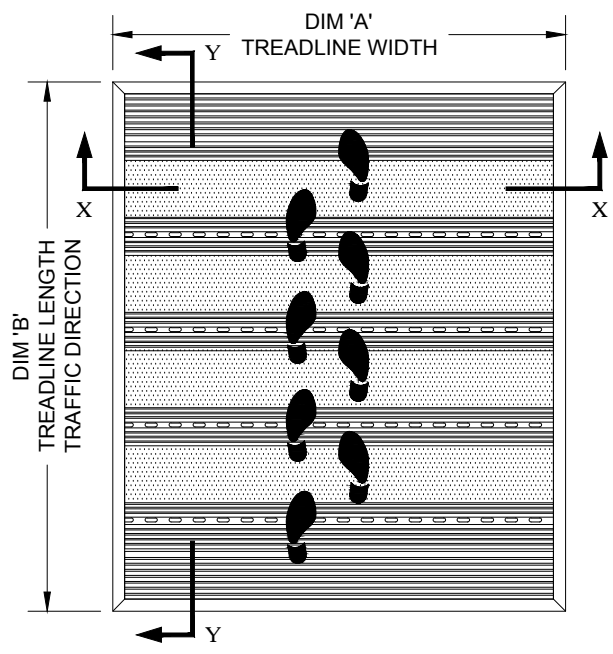
TREADLINE WITH ALUMINUM LEVEL BASE FRAME

INSERT STYLE: INSERT COLOR: CATALOG NUMBER: T1 PART NUMBER:

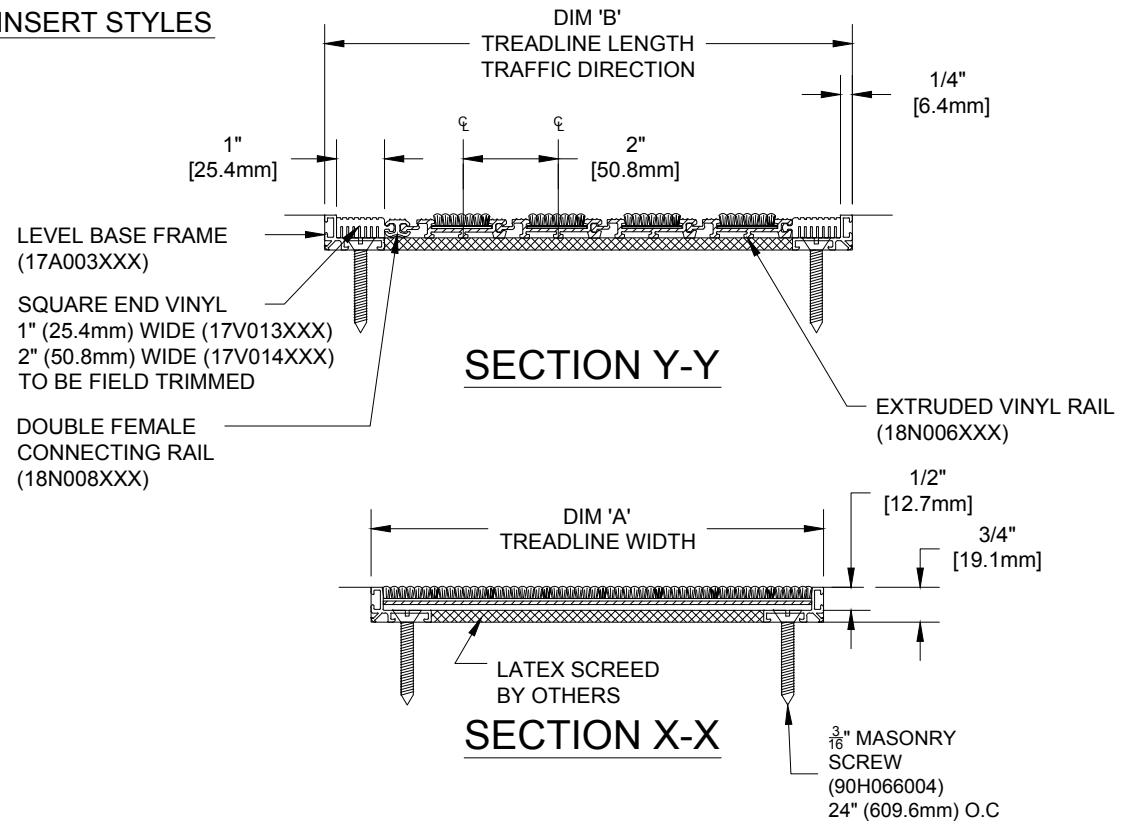
NO.	REVISION	DATE	BY
NO.	F&F RELEASE	DATE	BY

EXTERIOR CARPET T1EC 19C018XXX
HEAVY-DUTY CARPET T1HC 19C010XXX

TREADLINE INSERT STYLES



TYPICAL PLAN VIEW



NOTES:

- *ALL SURFACES IN CONTACT WITH MASONRY ARE TO RECEIVE A COAT OF ZINC CHROMATE PRIMER
- *MAX. SINGLE GRID SIZE NOT TO EXCEED 12'-0" (3.66M) IN WIDTH (DIM "A") OR 100 SQUARE FEET.
- *PLEASE VERIFY TRAFFIC DIRECTION
- *TREADLINE SHALL BE ABLE TO SUPPORT A 300 LB. ROLLING LOAD.



PLEASE VERIFY ALL	QTY	MARK #	LOCATION	MODEL	DIM 'A' WIDTH	DIM 'B' LENGTH	VINYL RAIL COLOR		FRAME FINISH
							BLACK	BROWN	
							BLACK	BROWN	
							BLACK	BROWN	
							BLACK	BROWN	

PROJECT:		
LOCATION:		
CONTRACTOR:		
AGENT:		SHT:
DRG. BY:	DATE:	JOB NO.: