

PEDIMAT AA WITH THRESHOLD FRAME





INSERT STYLE:

INSERT COLOR:

CATALOG NUMBER: M2

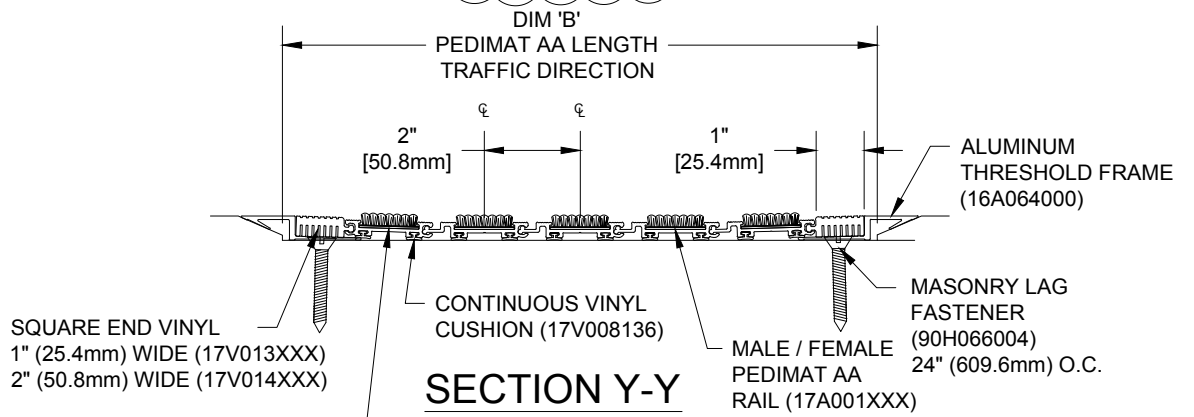
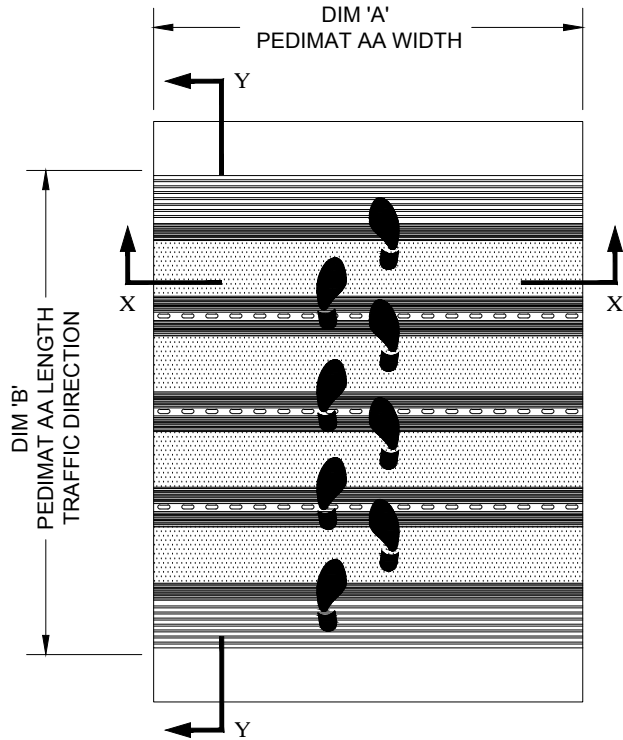
PART NUMBER:

| | | | |
|-----|-------------|------|----|
| NO. | REVISION | DATE | BY |
| NO. | F&F RELEASE | DATE | BY |
| | | | |
| | | | |

| | | | | | | |
|---|---|---|---|--|---|---|
|  |  |  |  |  |  |  |
| RECYCLED RUBBER M2RR 19R001XXX | EXTERIOR CARPET M2EC 19C018XXX | HEAVY-DUTY CARPET M2HC 19C019XXX | VINYL M2V 19V002XXX | VINYL-ABRASIVE M2VA 19M001XXX | SERRATED ALUM. INSERT M2SAI 19A001001 | POURED ABRASIVE INSERT M2PA 19A005XXX |

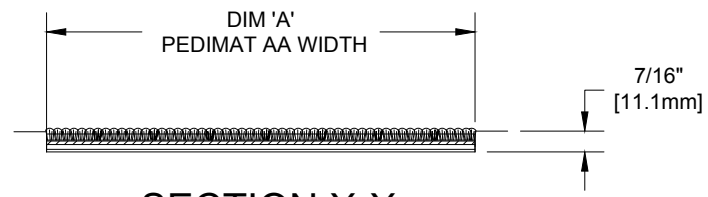
PEDIMAT AA INSERT STYLES

FIELD NOTE: DIM 'B' TO BE TAKEN FROM FACE OF DOOR THRESHOLD TO DOOR THRESHOLD.



SQUARE END VINYL
1" (25.4mm) WIDE (17V013XXX)
2" (50.8mm) WIDE (17V014XXX)

FEMALE PEDIMAT AA RAIL (17A002XXX)



NOTES:

*ALL SURFACES IN CONTACT WITH MASONRY ARE TO RECEIVE A COAT OF ZINC CHROMATE PRIMER

*MAX. SINGLE GRID SIZE NOT TO EXCEED 12'-0" (3.66M) IN WIDTH (DIM "A") OR 100 SQUARE FEET

*PLEASE VERIFY TRAFFIC DIRECTION

*PEDIMAT AA SHALL BE ABLE TO SUPPORT A 300 LB. ROLLING LOAD. LARGER LOADING MAY BE ACCOMODATED.



| PLEASE VERIFY ALL | QTY | MARK # | LOCATION | MODEL | DIM 'A' WIDTH | DIM 'B' LENGTH | FINISH | NOTES |
|-------------------|-----|--------|----------|-------|---------------|----------------|--------|-------|
| | | | | | | | | |
| | | | | | | | | |
| | | | | | | | | |
| | | | | | | | | |

| | | |
|-------------|-------|----------|
| PROJECT: | | |
| LOCATION: | | |
| CONTRACTOR: | | |
| AGENT: | | SHT: |
| DRG. BY: | DATE: | JOB NO.: |