

PEDIMAT AA WITH ALUMINUM TAPERED ANGLE FRAME


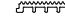

INSERT STYLE:

INSERT COLOR:

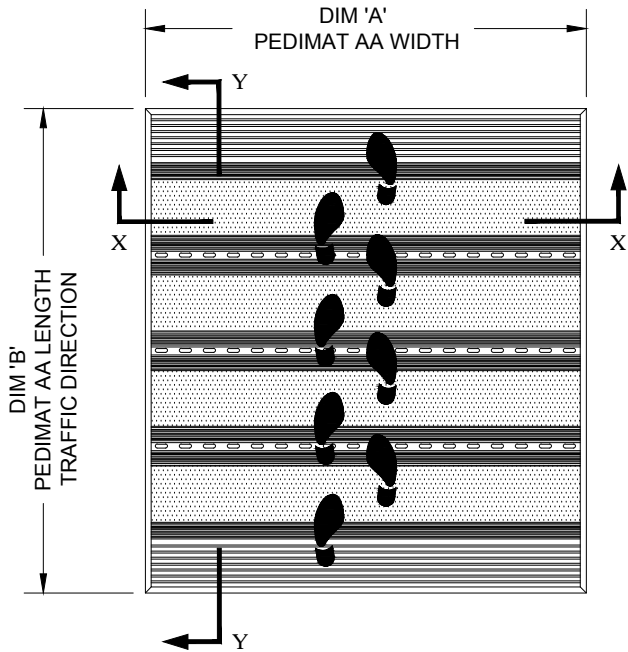
CATALOG NUMBER: M2

PART NUMBER:

NO.	REVISION	DATE	BY
NO.	F&F RELEASE	DATE	BY

						
RECYCLED RUBBER	EXTERIOR CARPET	HEAVY-DUTY CARPET	VINYL	VINYL-ABRASIVE	SERRATED ALUM. INSERT	POURED ABRASIVE INSERT
M2RR 19R001XXX	M2EC 19C018XXX	M2HC 19C010XXX	M2V 19V002XXX	M2VA 19M001XXX	M2SAJ 19A001001	M2PA 19A005XXX

PEDIMAT AA INSERT STYLES

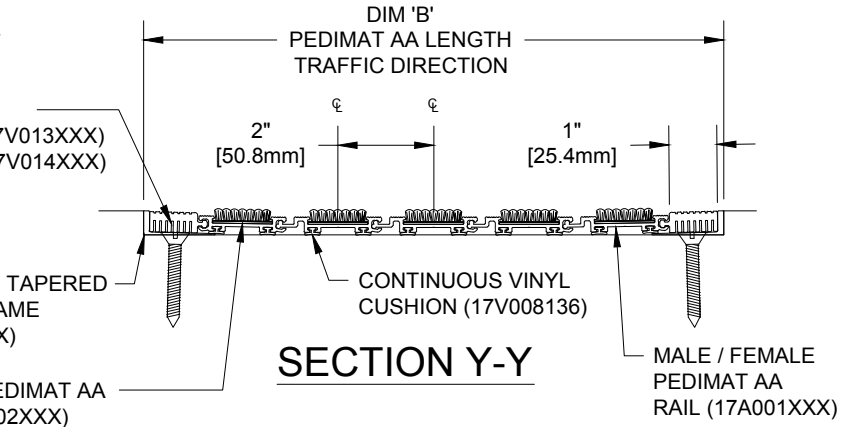


TYPICAL PLAN VIEW

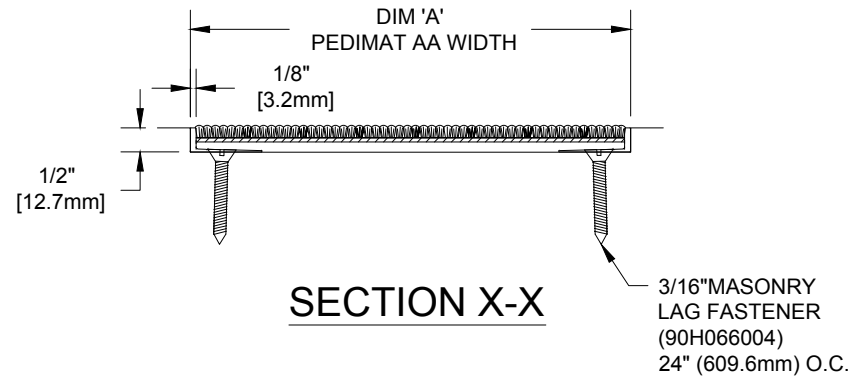
SQUARE END VINYL
1" (25.4mm) WIDE (17V013XXX)
2" (50.8mm) WIDE (17V014XXX)

ALUMINUM TAPERED ANGLE FRAME (16A051XXX)

FEMALE PEDIMAT AA RAIL (17A002XXX)



SECTION Y-Y



SECTION X-X

NOTES:

*ALL SURFACES IN CONTACT WITH MASONRY ARE TO RECEIVE A COAT OF ZINC CHROMATE PRIMER

*MAX. SINGLE GRID SIZE NOT TO EXCEED 12'-0" (3.66M) IN WIDTH (DIM "A") OR 100 SQUARE FEET

*PLEASE VERIFY TRAFFIC DIRECTION

*PEDIMAT AA SHALL BE ABLE TO SUPPORT A 300 LB. ROLLING LOAD. LARGER LOADING MAY BE ACCOMMODATED.



PLEASE VERIFY ALL	QTY	MARK #	LOCATION	MODEL	DIM 'A' WIDTH	DIM 'B' LENGTH	FINISH	NOTES

PROJECT:		
LOCATION:		
CONTRACTOR:		
AGENT:		SHT:
DRG. BY:	DATE:	JOB NO.: